



38 Ludgate Hill, London, EC4M

BUTLER  STAG



Situated in a historic building dating back to 1850, this apartment offers a unique living experience with its conversion style. With 538 sq ft of space, there is ample room to create a comfortable living area while enjoying the character and charm of a bygone era.



- One Bedroom
- Conversion
- Furnished
- Close to Local Amenities
- Available Now
- Walking distance to St Pauls

This charming apartment located in the heart of London on Ludgate Hill. This delightful property boasts a reception room, a bedroom, and a bathroom, making it a perfect cozy space for a single individual or a couple looking to reside in the bustling city

The location of this property is truly unbeatable, with St. Paul's Cathedral just a stone's throw away. Imagine waking up to the sight of this iconic landmark every morning, truly a sight to behold.

Whether you are looking for a long-term rental or a new place to call home, this apartment on Ludgate Hill offers a fantastic opportunity to live in the heart of the city. Don't miss out on the chance to experience city living at its finest in this historic conversion apartment.

St Paul's Underground station is within a short stroll along with all the coffee shop's, bars and restaurants.





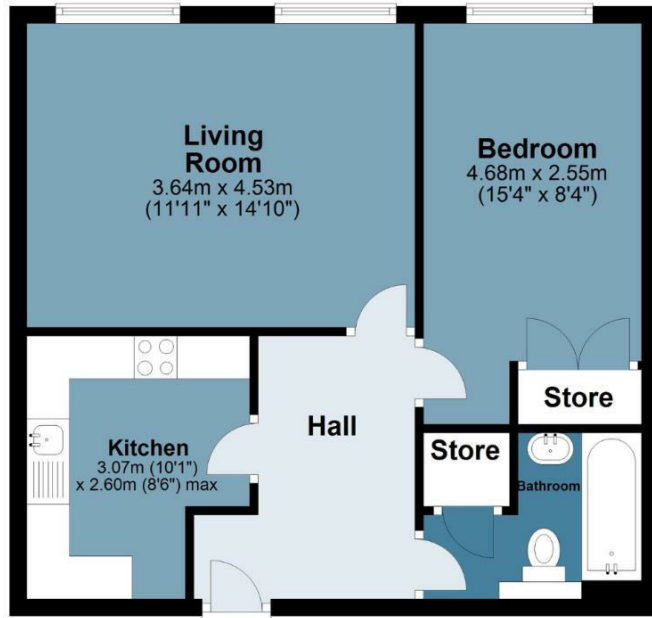
Ludgate Hill

Approx. Gross Internal Area 48.8 sq. metres (525.3 sq. feet)

BUTLER & STAG

Fourth Floor

Approx. 48.8 sq. metres (525.3 sq. feet)



Measurements are approximate and for illustration purposes only. While we do not doubt the accuracy and completeness, we advise you conduct a careful independent assessment of the property to determine monetary value
© @modephoto.uk www.modephoto.co.uk

IMPORTANT NOTICE - These particulars have been prepared in good faith and they are not intended to constitute part of an offer or contract. We have not performed a structural survey on this property and the services, appliances and specific fittings have not been tested. All photographs, measurements, floor plans and distances referred to are given as a guide and should not be relied upon.

BUTLER & STAG

☎ 020 8102 1236

🏠 508 Roman Road, Bow, London, E3 5LU

✉ bow@butlerandstag.com

www.butlerandstag.uk